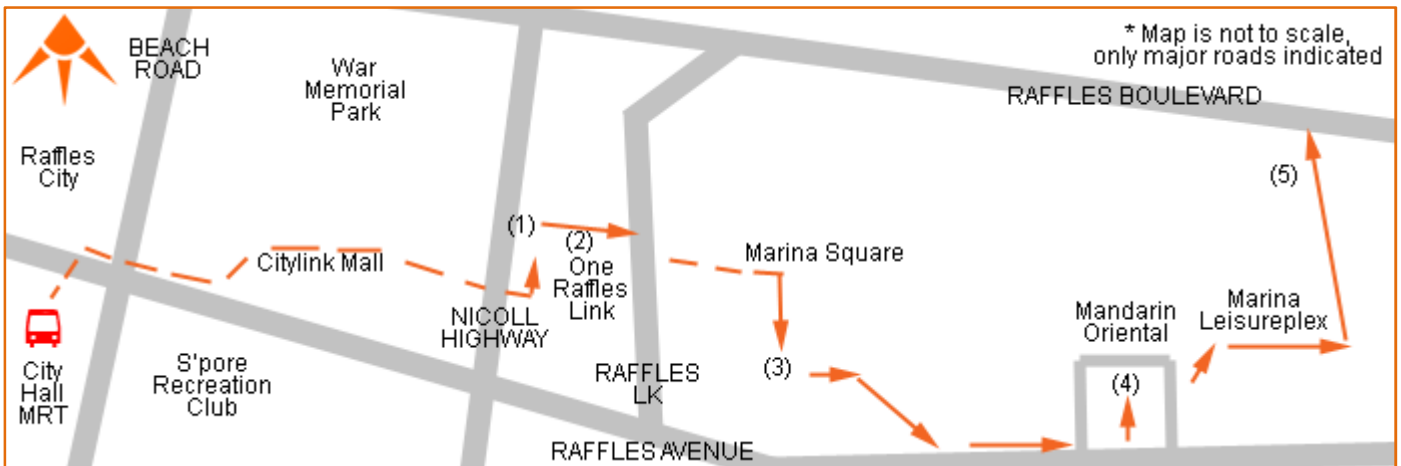


Sculptures at Marina



From City Hall MRT, walk inside CityLink Mall heading towards Marina Square exit.

On the walls of CityLink Mall, opposite the exit to Raffles Link/Marina Square, you will see Cast Bronze Relief Tablets. **The Record 1981 (1)** by Cheung Yee. The artwork consists of 120 rectangular bronze plaques. Each plaque (picture below) depicts different scenes and auspicious symbols that were prevalent in ancient Chinese cities: Fortune, Longevity, Sun, Dragon & Phoenix, Harvest and so forth. The artwork's vertical script read left to right resemble a page from a Chinese character text book and serves as a 'Heavenly' book, a recorded history of earth over time and its reader, the Universe. The Tablet signifies the coexistence between Man and the Universe in perfect harmony and eternal prosperity.



Take the Raffles Link/Marina Square exit up to the ground floor. Here you will see the **"Water Cycle 2000" (2)**, picture below, mechanical sculpture designed by Jonathan Minns of the British Engineerium Trust. A giant bronze wheel pours water down into the semicircular pond below. The layout of the wheel was based on Feng Shui principles: the flow of water towards the mall means that abundant wealth will flow into the shopping area.



Take the escalator up and walk into Marina Square. Exit out via Esplanade/Marina Bayfront (exit near #02-163, currently occupied by MANGO). Exit to the open air (outside Starbucks), walk straight and you will see John Portman and Associates of Atlanta USA's **Octopus (3)**, cascading waters flowing down its "tentacles".



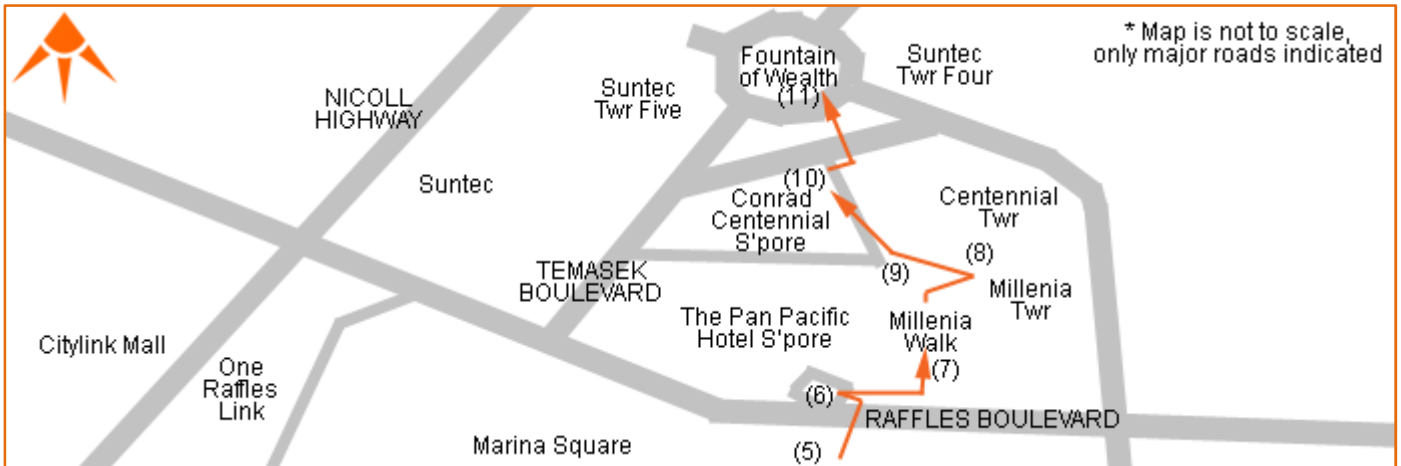
To the left of the "Octopus", head down the steps to Raffles Avenue. Along the side of the road, walk in the opposite direction of the vehicles flow. In front of Mandarin Oriental you will see Antoine Poncet's **Fleur Marine (1984-85) (4)** or "Flower of the Sea". The organic shaped bronze sculpture within the fountain represents a coral or a sea creature. There are also more sculptures inside Mandarin Oriental lobby.



Go up to the 2nd level of Marina Square by taking the spiral staircase beside 'Fleur Marine'. Once on the 2nd level turn right and walk alongside the building, you will pass by the GV entrance, at the end of the building turn left. At the end of the building again just walk straight into the open, on your left you will see a bronze sculpture **Continuum (5)** by Charles Perry.



Sculptures at Marina



Continue walking straight ahead, cross the aerial bridge (below is Raffles Boulevard), take the escalator down, turn left to Pan Pacific Hotel. In front of the hotel near the main road is Lin Emery's **Deva (6)**, stainless steel kinetic sculpture that turns like a windmill.



Back track a little and go into Millenia Walk. This building signature architectural feature is a series of 15 **asymmetrical pyramids (7)** set high above the mall (look upwards) – the brainchild of architect Philip Johnson.



Walk towards the Service Desk and exit on the right side to Sculpture Plaza. Outside is Roy Lichtenstein's **Six Brushstrokes, 1996 (8)**, depicting giant happy brush strokes. The sculptures were fabricated in Bristol Rhode Island and installed here in June/July 1997. Brought into Singapore only months before Lichtenstein's death, they are a befitting epilogue to his life's achievements and his final wish to showcase his art in Singapore.

Nearby you will see a grand water display, featuring a 60m water curtain overlooking the plaza connecting Millenia Walk to Millenia Tower and Centennial Tower, dazzles as a centerpiece.



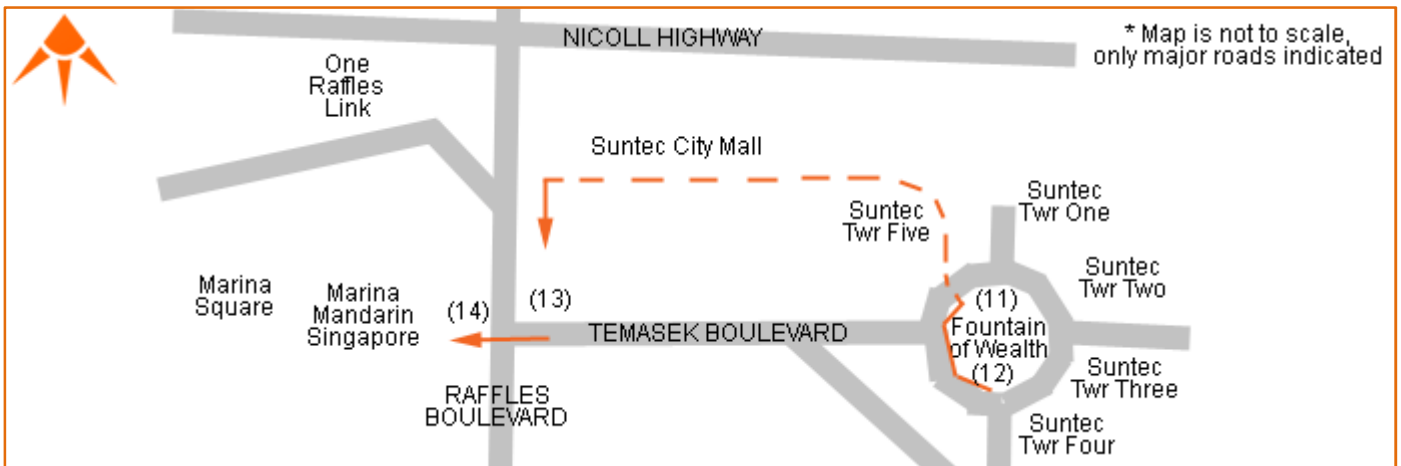
Go through Millenia Walk again to the opposite side. Outside you will find **Soaring Helix (9)** by Philip Johnson.



Turn right and head down to the end of the road. On the left is the entrance to Conrad International Centennial Singapore. At the porch, you will see **Harmony (10)**, picture below, mounted on the wall facing the entrance, by Richard Sparling.



Sculptures at Marina



Turn right to Millenia Walk and take the escalator down to cross over to Suntec City using the underpass. Once you enter into Suntec City, in front of you is the **Fountain of Wealth (11)**, the fountain covers an area of 1,683.07m² and is in the Guinness Book of Records for the largest fountain in the world. You will see a winding staircase at the edge of the Fountain of Wealth; take the staircase up to the ground level.



On the ground level, you should be in the middle of the vehicle roundabout. Along the encircling walkway, within the roundabout, are the **Twelve Medallions (12)** by Singaporean Han Sai Por. Each one representing a different animal of the Chinese zodiac.



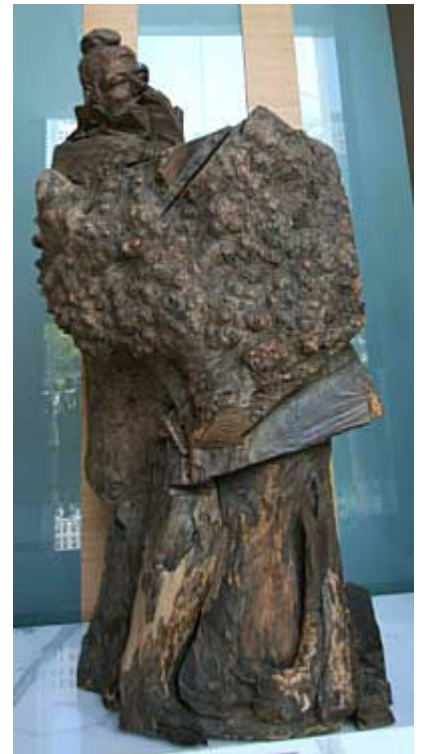
Climb down one of the winding staircase and proceed into Suntec City. Inside Suntec City, make your way to the Galleria Service Desk. Exit out the building and turn left. At the junction of Temasek Boulevard and Raffles Boulevard is **Abundance III (13)**, by Sun Yu Li, an unusual optical work which seems to change shape as one move past it.



Across Raffles Boulevard, in front of Marina Mandarin Hotel is **"Between Sea and Sky" (14)** – commissioned by Marina Centre Holdings Pte Ltd. Sculptor: Olivier Strebelle 1985-6.



Inside Marina Mandarin Hotel lobby you can see two sandalwood sculptures by Ju Ming: -



One of the two major poets of the Tang Dynasty, Li Bai (above), well-known for his love for wine.

The other sculpture is Confucius whom is a teacher, philosopher and political theorist, whose ideas have influenced the civilization of Eastern Asia.